

Social and territorial networks in coping with the extension of agribusiness projects in the Senegal River Delta.

Adamczewski Hertzog Amandine, Toure Labaly

INTRODUCTION

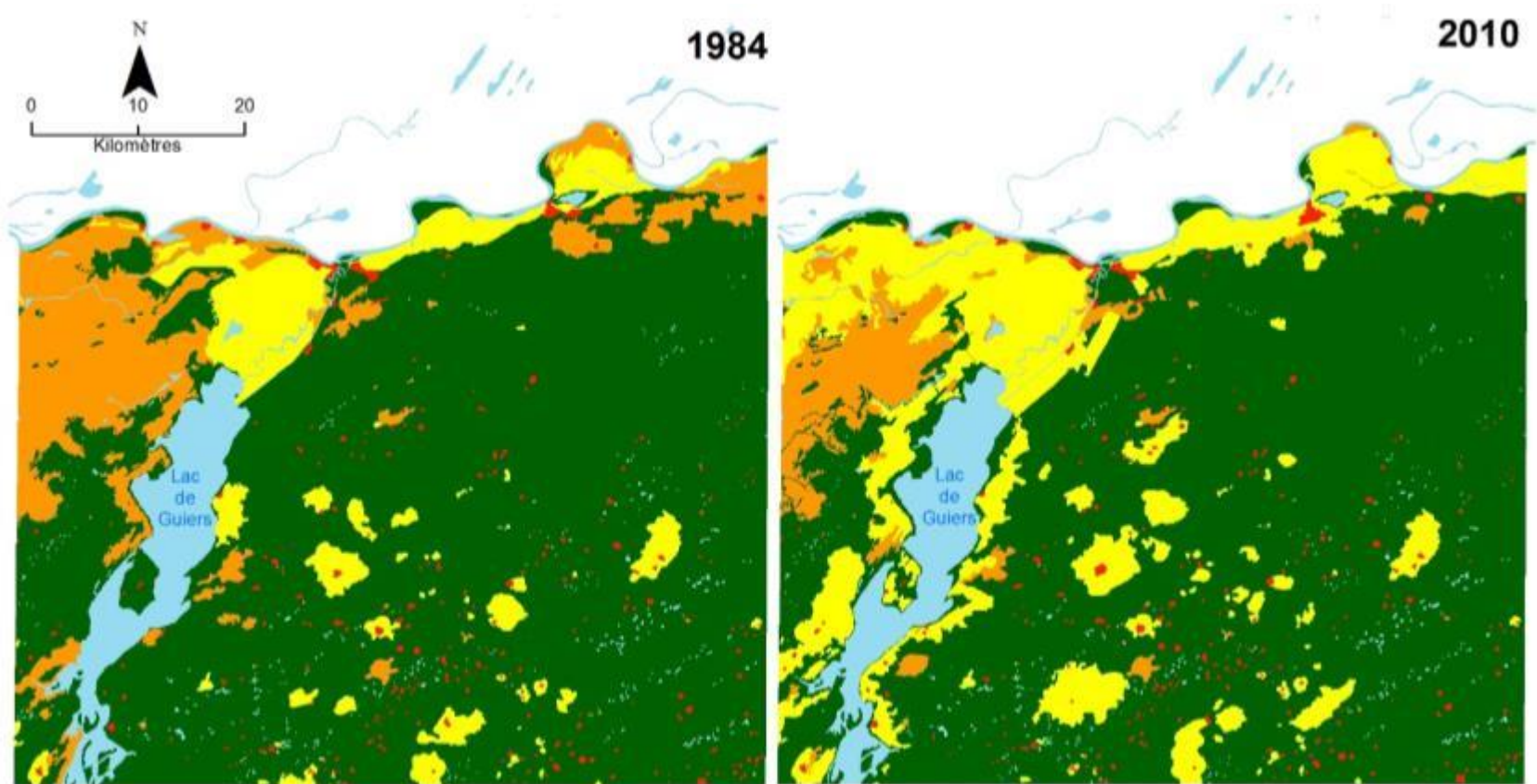


- Increasing land pressures on arable lands
- Commoditization of agricultural areas
- Promotion of agro-industries

Delta of the Senegal River
PRODUCTIVE HUB



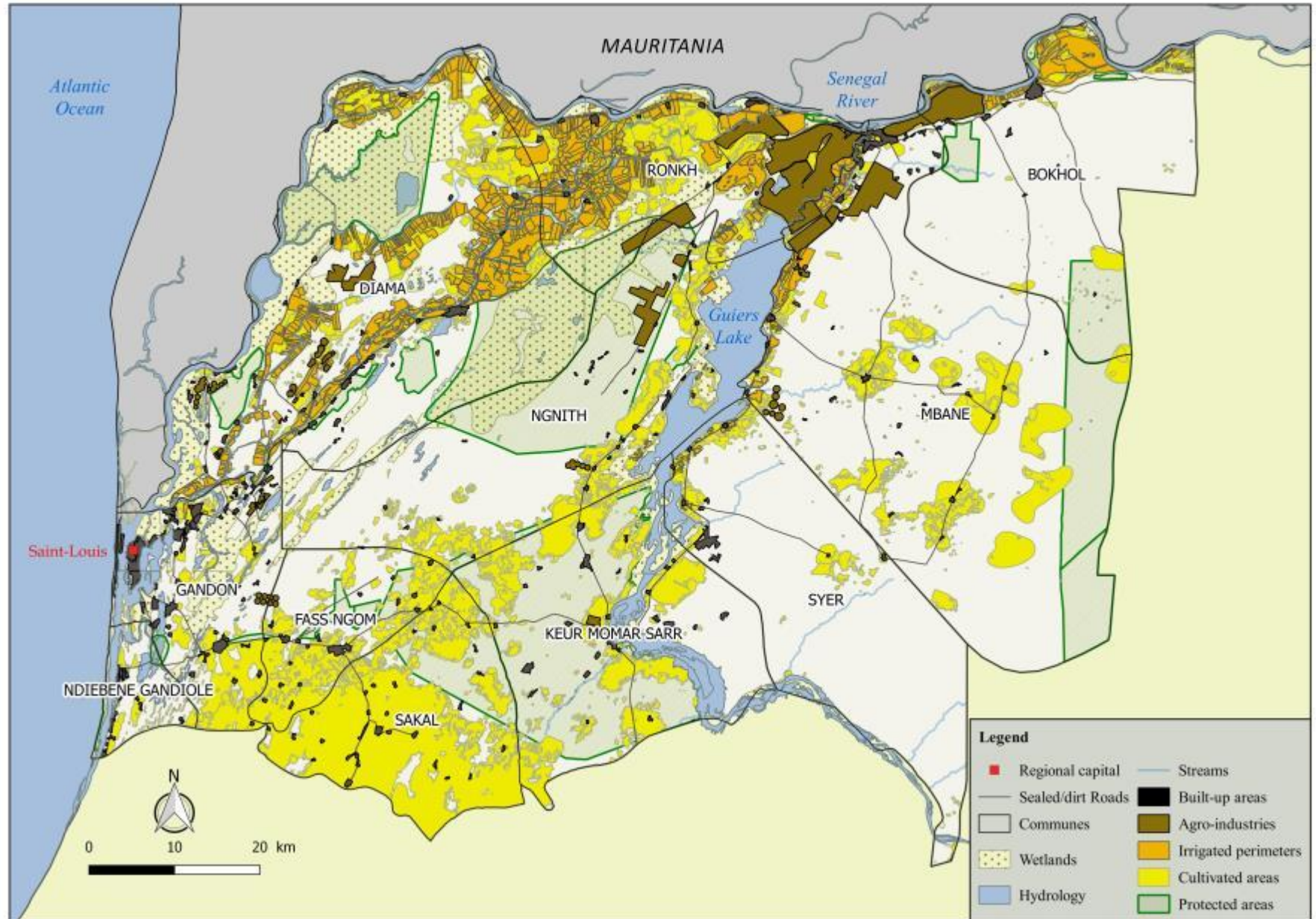
INTRODUCTION



Occupation du sol

Zone artificielle Zone d'eau Zone de culture Zone de végétation naturelle Zone dénudée

INTRODUCTION



INTRODUCTION

- PDIDAS project
 - Inclusive and Durable Development for Agri-businesses
 - government led, funded by World Bank
- To better integrate agri-businesses in current land management and tenure regimes, experimentation: providing formal legal recognition to investors
- Secure tenure <-> investments

INTRODUCTION

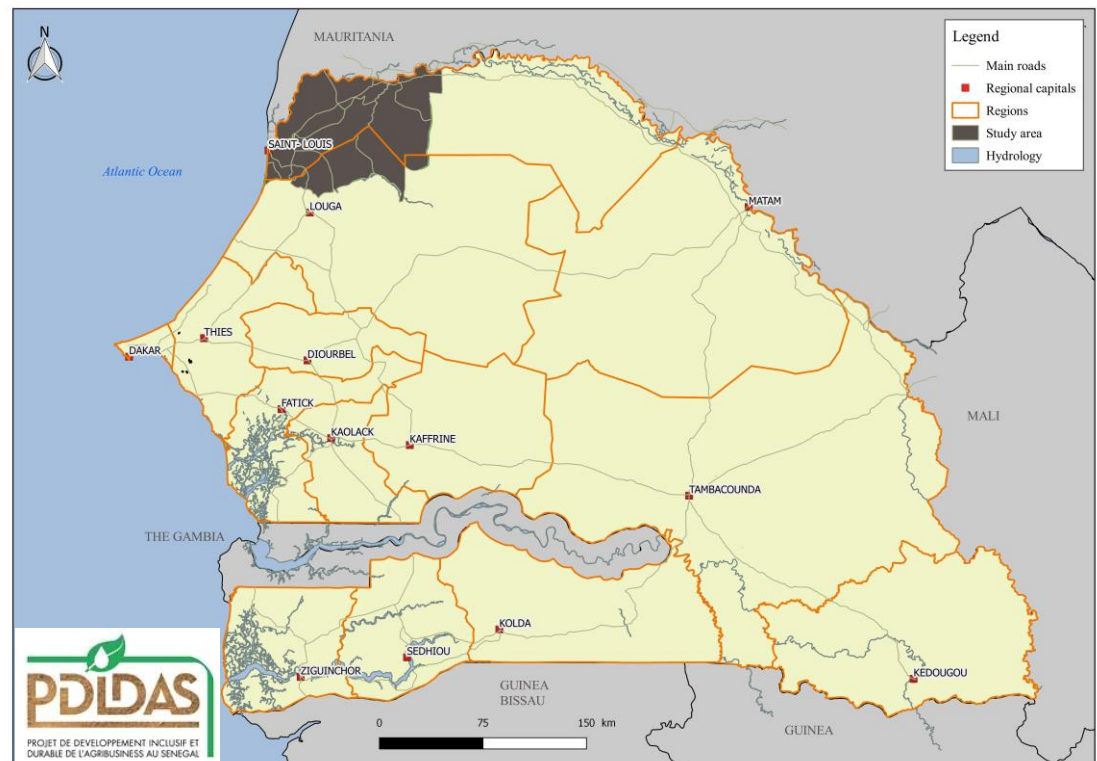
- Promotion of new models for land governance and tenure :
 - What will be the social, economic and environmental impacts of these new projects?
 - How to promote integrating different production systems, at least in a transition phase?
 - How to promote inclusiveness for improved management of land and water?
 - Will the governance reforms secure access to resources, and hence more durable investments for the diversity of stakeholders in these areas?

METHODS

- PDIDAS project

Supporting an inclusive and sustainable development of agriculture

Promoting the agricultural production, processing and marketing of horticultural products for domestic markets (enabling an increase of national food security and sovereignty), as well as for West African and international markets



METHODS

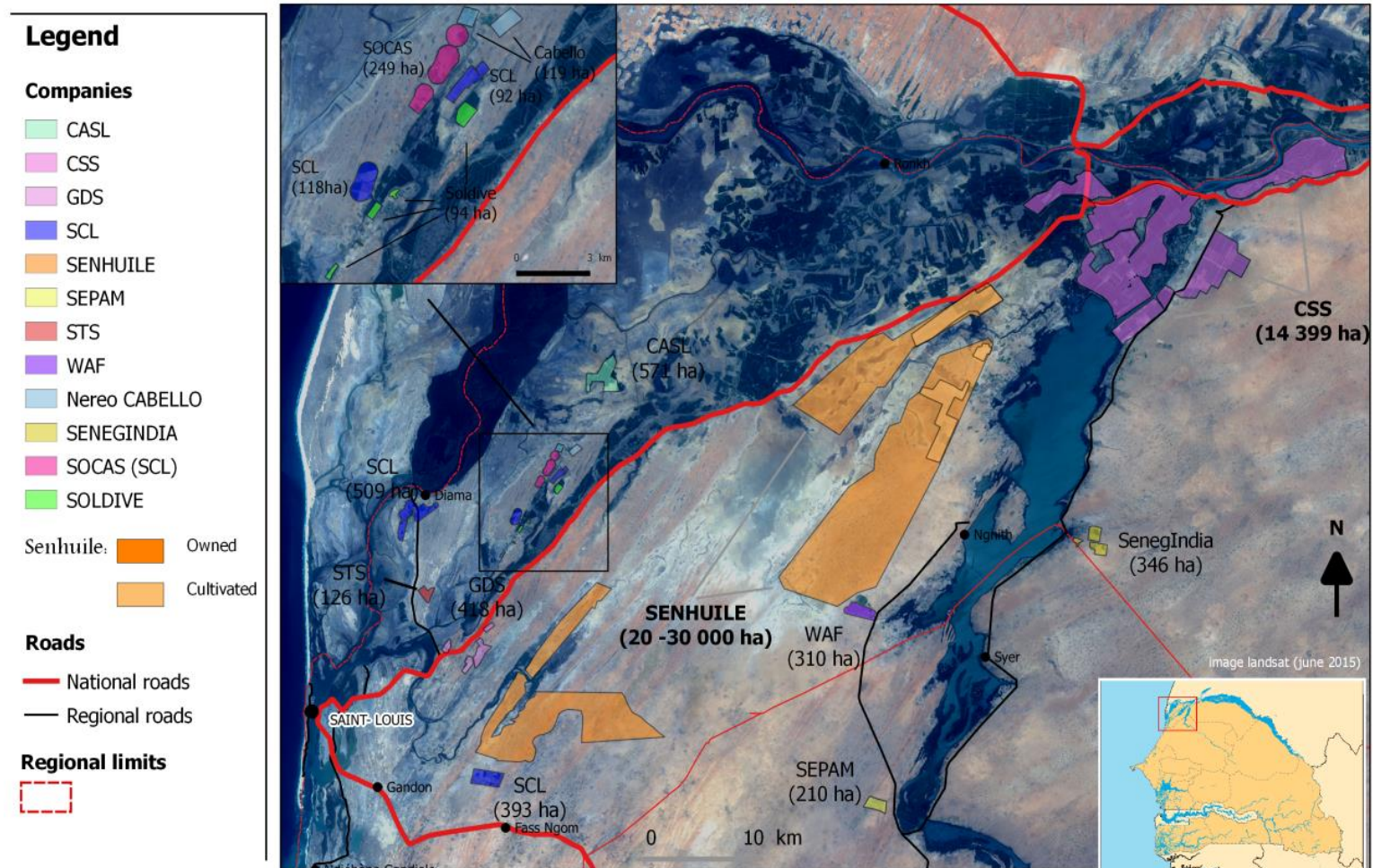
- From principles to practices
 - the majority of lands targeted by investors are not clearly registered even less spatially bounded
 - lack of key information at the rural communities or local authorities' levels that are required to get a general overview of the affected lands, populations, and their locations
 - need for land users and decision/policy makers for adapted tools for planning and monitoring

METHODS

- Research framework:
 - Landscape/environmental dynamics
 - Typologies of production systems
 - Interactions production systems – territories
 - Social-economic impacts
- Setting up a geographic information system to
 - identify the land concerned by private investment projects;
 - monitor the application of the local agreements signed (e.g. by localizing the infrastructures promised by the investors as compensations);
 - determine which land could be transferred to investors
 - Support territorial authority

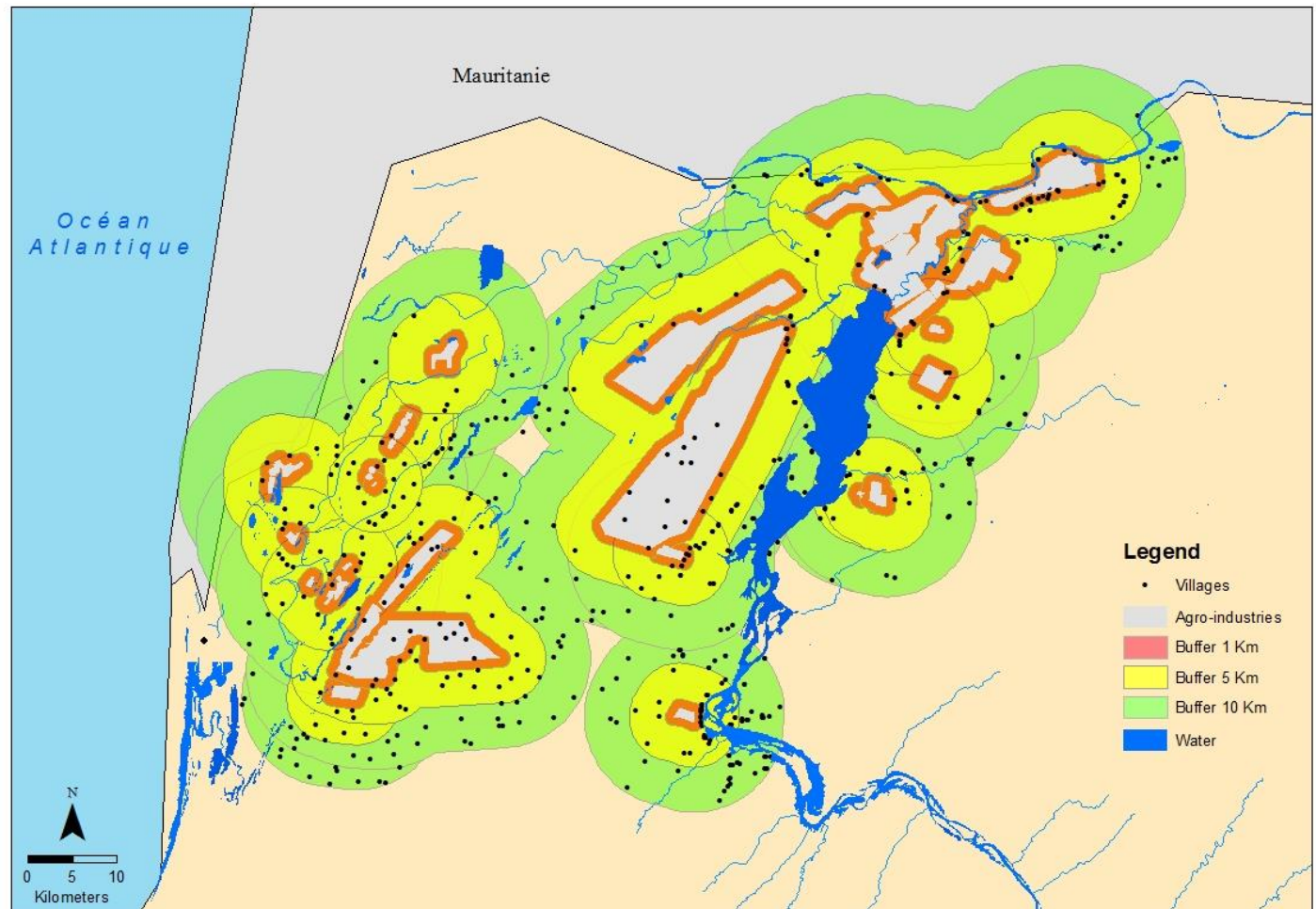
RESULTS

- Inventory of agro-industries



RESULTS

- Surveys for agro-industries and smallholder farmers in the vicinity



RESULTS

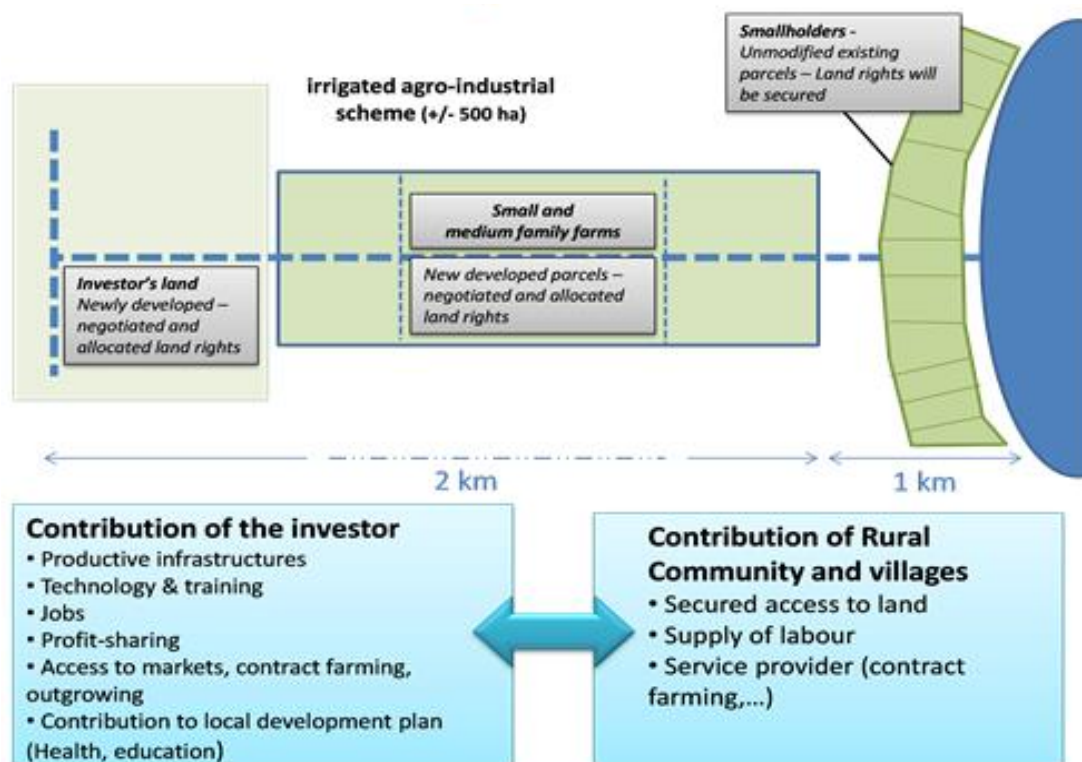
- Surveys for agro-industries and smallholder farmers in the vicinity

| | Agro-industry | Family Farms |
|-----------------------------|---|--|
| Identity | Business plan Investments and expected returns Financial partners | Education level Localities |
| Production and markets | Type of cultures Surfaces and yields Inputs and market opportunities | Communal/personal plots Surfaces and yields Market/subsistence, livestock farming (extensive/intensive) |
| Workforce | Permanent/temporary labor Gender considerations Capacity building opportunities | Age classes Availability of labor |
| Tenure access | Implementation scheme Type of land tenure | Types of land rights Customary tenure characteristics |
| Natural resource management | Water usage Impacts assessments | Issues for access and use Strategies and adaptation capacities |
| Interactions | Official/tacit arrangements Ground rent Investments in infrastructures | Contract farming Negotiation capacity Type of contracts |

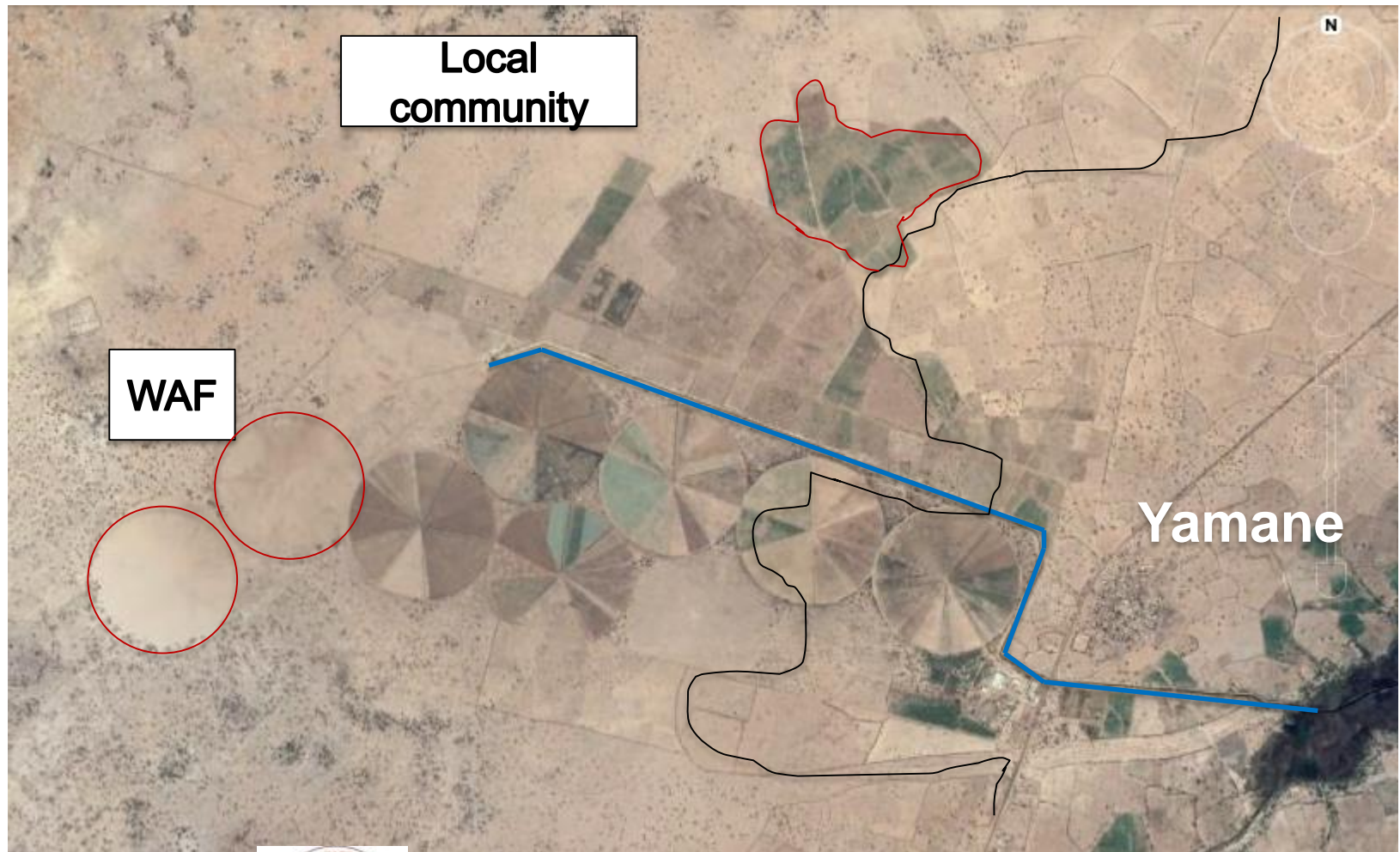


RESULTS – West Africa Farms

- Original framework:
 - WAF's intent is to promote a vision of win-win partnership between the company and the family farmers
 - Original concept for WAF with a spatial configuration in favor of smallholders, close to the main water source (lake) and with allocated plots around the newly created canal



RESULTS – West Africa Farms



DISCUSSION-CONCLUSION

- Need to strengthen safeguards, accountability and transparency
- Need to accompany local communities in monitoring and evaluating the installation of agro-industries

